

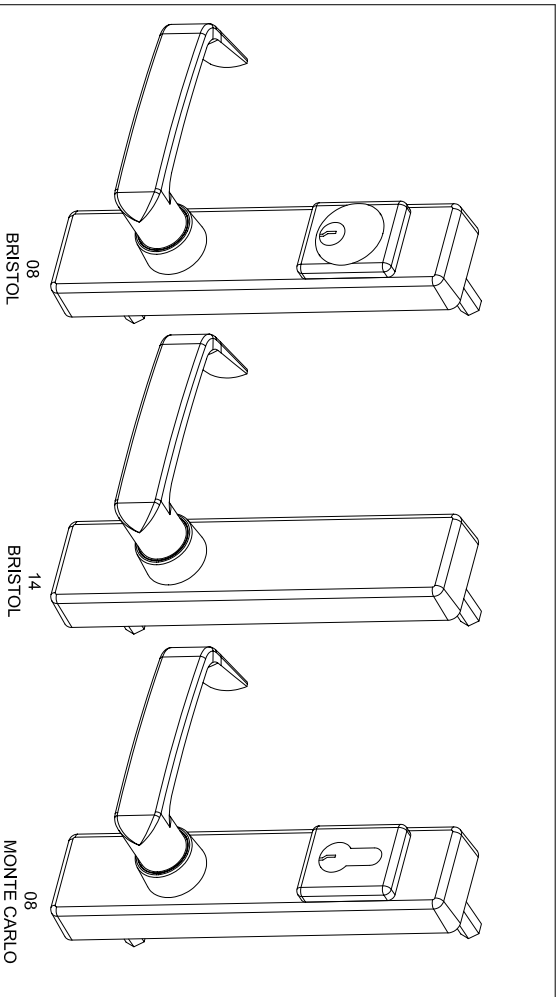


® Detex Corporation, 302 Detex Drive, New Braunfels, Texas 78130-3045
(830)629-2900 / 1-800-729-3639 / Fax (830)620-6711
E-MAIL: detex@detex.com
INTERNET: www.detex.com

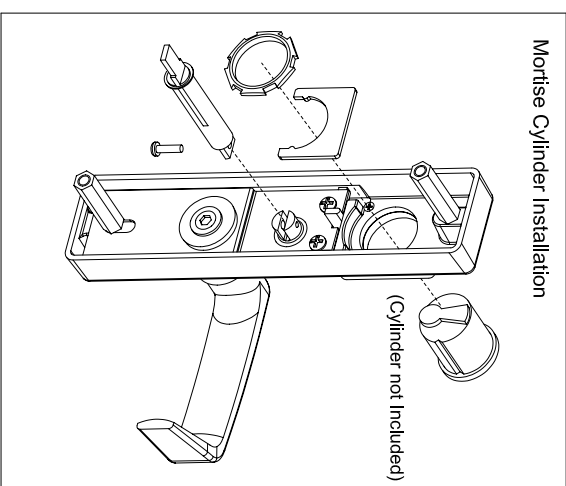
TEMPLATES ARE AVAILABLE ON WEBSITE

102995 June 6, 2005

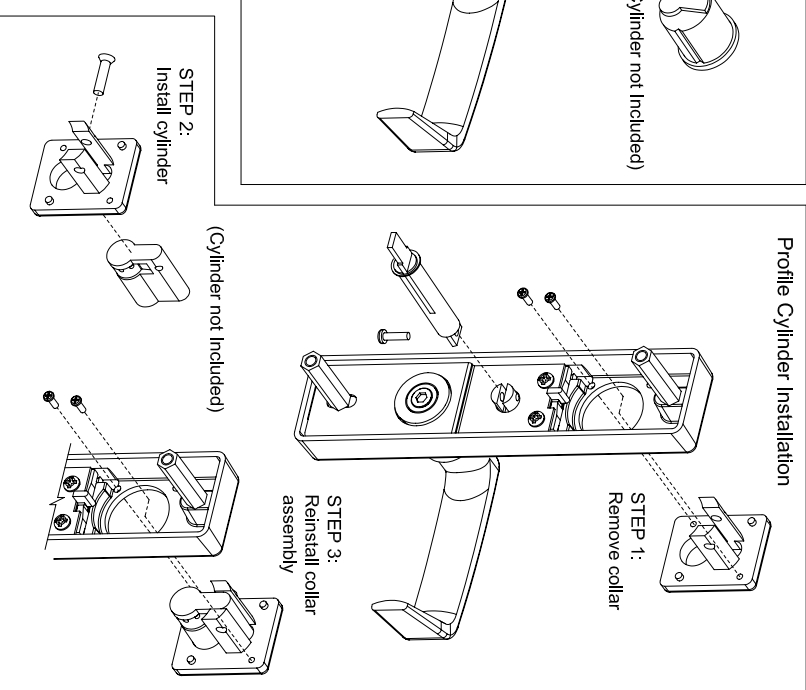
INSTALLATION INSTRUCTIONS FOR DETEX VALUE SERIES® NARROW TRIM



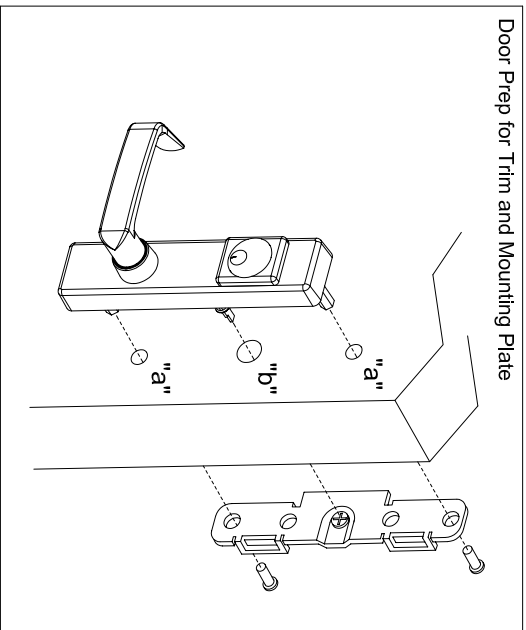
Mortise Cylinder Installation



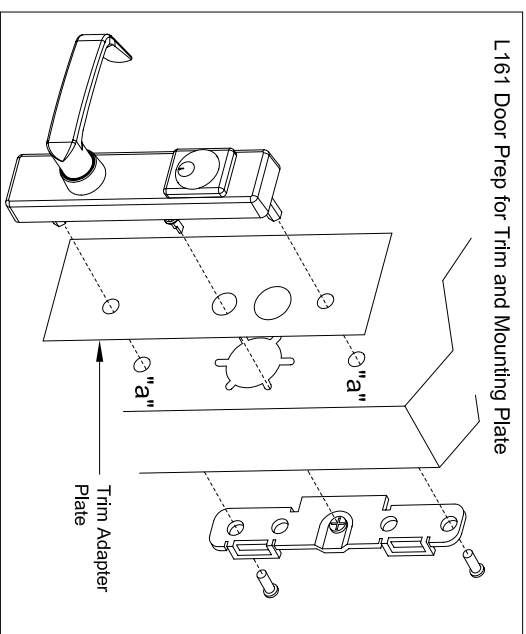
Profile Cylinder Installation



Door Prep for Trim and Mounting Plate



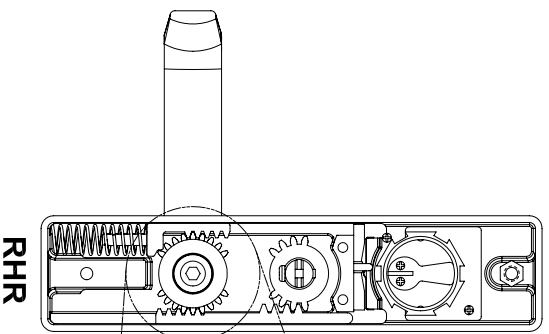
L161 Door Prep for Trim and Mounting Plate



HOLES "a"		HOLE "b"
INSIDE (Metal Doors Only)		
	5/16" (8mm)	3/4" (20mm)
OUTSIDE		THRU HOLE
	1/2" (13mm)	

CHANGE LEVER HANDING

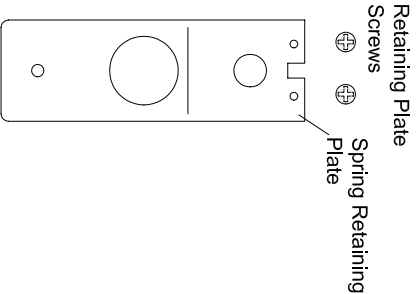
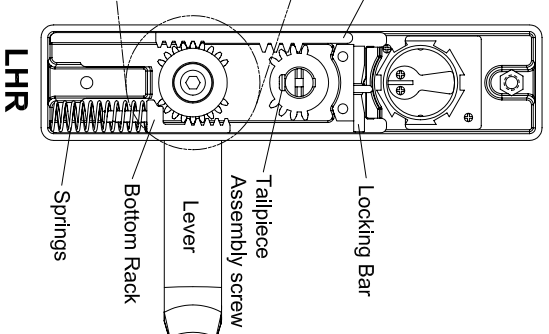
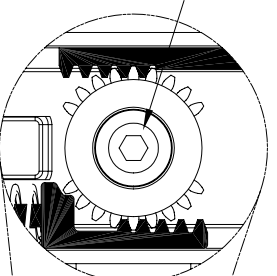
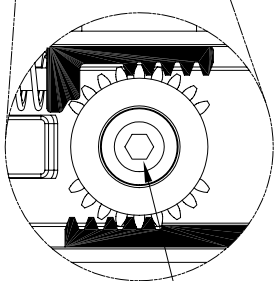
Before removing Top and Bottom Racks, note tooth positions. If excessive play exists on handle, confirm tooth alignment.



- Remove tailpiece assembly screw. (remove assembly if necessary)
- Remove hex standoff and two (2) screws holding spring retaining plate.

WARNING: Springs under pressure!

- Remove Spring Retaining Plate.
- (09 Function only) Move Lock Bar to opposite side.
- Carefully remove springs and bottom rack.
- Remove top rack.
- Rotate lever to opposite side.
- Engage bottom rack on the opposite side as shown.
- Engage top rack on the opposite side as shown.
- Install springs on bottom rack. **WARNING:** Springs under pressure!
- Replace Spring Retaining Plate, hex standoff and screws.
- Replace tailpiece assembly screw.



Handling Complete